

## What You Can Do

- Write to your provincial and federal members of parliament supporting legislation to ban the veal crate.
- Ask your butcher or supermarket manager to stock more 'naturally raised veal'.
- Refrain from buying 'white veal', or ordering it in restaurants.
- Explain to your friends the real cost of 'white veal'.
- Support the **Canadian Farm Animal Care Trust (CANFACT)** in its efforts to ban veal crates and improve the quality of life for veal calves.



Help CANFACT  
Help  
Farm Animals

*René Descartes believed that animals were merely organic machines, lacking the ability to suffer or to perceive pain.*

*Three hundred years later, most modern intensive livestock production methods appear to be based on the same assumption.*

**The Canadian Farm Animal Care Trust (CANFACT)** believes that all farm animals, regardless of the length of their lives, or the purpose for which they are bred, deserve to be treated, not merely as production machines, but as sentient creatures deserving of consideration and compassion.

Please help us to achieve this goal.

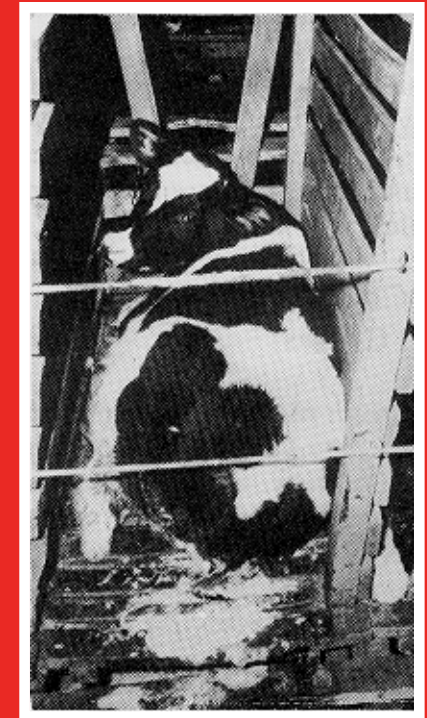
Support CANFACT  
by eating humanely



**Canadian Farm Animal  
Care Trust**

92 Caplan Ave.  
Ste. 306  
Barrie, ON L4N 0Z7  
Phone: (705) 436-5776 Fax (705) 436-3551  
www.canfact.ca  
email: canfact@rogers.com

# Having White Veal Tonight?



M.W. FOX/HSUS

Consider  
the Cost

Canadian Farm Animal  
Care Trust

# The Real Cost of White Veal is in the Suffering

---

Common practices used in raising calves for the production of 'white veal' make this product far too expensive - for the consumer and the calf!

Forget the comfortable image of happy farm children hand-feeding playful calves from a bucket. The reality of life for the vast majority of calves raised to produce 'white veal' in Canada bears no resemblance to this pleasant picture.

## The Cost of Housing (Veal Crates)

*The current recommended code of practice for raising 'white veal' calves cites 50 centimetres (22 inches) as a generally accepted width for crates housing calves weighing up to 202 kilograms. New facilities are requested to increase this width by only 4 inches!!*

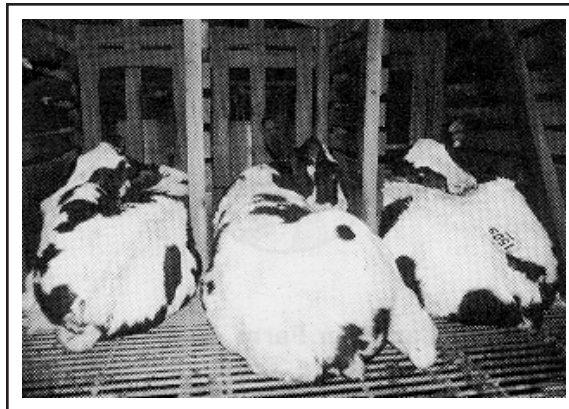
When they are just a few days old, most veal calves are placed in tiny crates fitted with slatted floors. The crates are raised off the ground. Bedding is rare. While the calves are small, some may be able to turn around if they are not tied up, but this freedom is lost to them as they grow. These calves can only stand up and lie down (with legs tucked under), until they are shipped for slaughter. Young calves like to sleep with their legs extended. They are allowed no other exercise.

## The Nutritional Cost

### To the Calf

The normal colour of calves' meat is a healthy dark pink. To attain the desired 'white' colour of fancy veal, calves are fed an all-liquid diet and deprived of necessary minerals, especially iron. The result is an anaemic condition which drastically reduces resistance to disease. Scours (diarrhea) and respiratory diseases are common.

Normally, calves start to eat solid food and roughage at approximately 2 weeks of age. Despite the fact that 'white veal' calves are not slaughtered until about 4 months of age, they are allowed no fibre in their diet, with the result that their digestive system, in particular the rumen, does not develop normally. The lack of iron and roughage leads calves to have a depraved appetite and they suck and chew at everything in their environment in an attempt to reduce their suffering.



M.W. FOX/HSUS

## To the Consumer

Due to their reduced immunity to disease, crated 'white veal' calves may be given unusual amounts of antibiotics. Some doctors are becoming alarmed that residues of these drugs are passed on to consumers, thus reducing the effectiveness of these antibiotics for human use.

Although opinions differ as to what levels of chemical residue (if any) are safe for human consumption, the fact remains that 'white veal' comes from calves with artificially suppressed immune systems and stunted digestive development.

## The Cost of Transportation

After 4 months of living in completely controlled conditions, with muscles atrophied from lack of exercise, the calves must endure the stress and hardship of transportation by truck, and the bustle, crowding and noise of sales and preslaughter handling.

*(Imagine being virtually bedridden for 4 months, and then being forced to take public transportation - standing for hours - in rush hour.)*